



BACK TO



Brands Featured:



GLENMUIR  
1891



Brooks Koepka





SEE PAGES 4 - 9



SEE PAGES 10 - 13



UNDER ARMOUR

SEE PAGES 14 - 15



SEE PAGES 16 - 17

**GLENMUIR**  
1891

SEE PAGES 18 - 19

Browse our incredible selection of premium golfwear brands, to help elevate your wardrobe on the course.

Technical styles which have been created to stand the test of time and 'putt' the style back in your swing.





# YOUR *WINNING* GOLFWEAR FORMULA



Dustin Johnson





Tiger Woods



**PARTNER  
YOUR BRAND  
WITH**



The recycled polyester used in Nike products begins as recycled plastic bottles, which are cleaned, shredded into flakes and converted into pellets. From there, the pellets are spun into new, high-quality yarn used in their products, delivering peak performance with a lower impact on the environment.



Black/White/  
Sky Grey



Sky Grey/Obsidian/  
White



White/Pure Platinum/  
Black

**DRI-FIT**



Ribbed collar  
to prevent  
curling



100%  
RECYCLED  
POLYESTER

Double  
knit fabric  
in piqué  
texture

**NK293**

Nike dry victory polo CB  
100% Recycled polyester

**S** 35/37.5" **M** 37.5/41" **L** 41/44"

**XL** 44/48.5" **2XL** 48.5/53.5"

**DRI-FIT**



Black



College Navy



Game Royal



Photo Blue



University Blue



University Red



White

100%  
RECYCLED  
POLYESTER

**NK295**

Nike dry victory polo solid  
100% Recycled polyester

**S** 35/37.5" **M** 37.5/41" **L** 41/44"

**XL** 44/48.5" **2XL** 48.5/53.5"

**DRI-FIT**



Nike Dri-FIT Technology is an innovative polyester fabric designed to help keep you dry so you can more comfortably work harder for longer. This unique high-performance microfibre construction supports the body's natural cooling system by wicking away sweat and dispersing it across the fabric's surface to evaporate faster.

## **FLEX CORE** SHORTS AND TROUSERS

**DRI-FIT**



Multiple pockets offer easy storage  
for your scorecard and tees.



Black/Black

**NK316**

Flex core shorts

96% Polyester, 4% Spandex

**30"** **32"** **34"** **36"** **38"**

**DRI-FIT**



Crafted from stretchy, sweat-wicking  
fabric, the Nike Dri-FIT flex pants let  
you move in comfort.



Black/Black

**NK315**

Flex core pants

96% Polyester, 4% Spandex

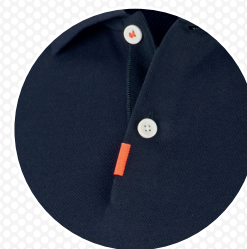
**30"** **32"** **34"** **36"** **38"**

\*30" not available in long length

Leg length: Short 78cm, Regular 83cm,  
Long 88cm



# PREMIUM GOLF POLOS



Button and placket detail

High-quality piqué fabric  
with a classic cotton look



Breathable construction  
and Dri-FIT Technology give  
it the fit and feel of your  
favourite golf top



Black



Dark Grey/Heather



Obsidian



White

Dropped back hem with  
side vents to allow you  
to wear the polo untucked  
for a more casual look

**DRI-FIT**



**NK292**

Nike polo slim  
58/65% cotton, 35/42% polyester  
**S** 35/37.5" **M** 37.5/41" **L** 41/44"  
**XL** 44/48.5" **2XL** 48.5/53.5"

**DRI-FIT**



Nike Dri-FIT Technology is an innovative polyester fabric designed to help keep you dry so you can more comfortably work harder for longer. This unique high-performance microfibre construction supports the body's natural cooling system by wicking away sweat and dispersing it across the fabric's surface to evaporate faster.



**DRI-FIT**



Black/White/White



Blue Void/White/White



Sky Grey/White/White



University Red/White/White

**NK181**

The Nike polo golf stripe slim

65% Cotton, 35% Polyester

**S** 35/37.5" **M** 37.5/41" **L** 41/44" **XL** 44/48.5"

**2XL** 48.5/53.5"

**DRI-FIT**



Black/White/White



White/Black/Black



**NK299**

Women's Nike dry victory polo

100% Polyester

**XS** 8 **S** 10 **M** 12 **L** 14 **XL** 16

**DRI-FIT**



Black/White/Black



Blue Void/Sail/  
Blue Void



Habanero Red/  
Blue Void/  
Habanero Red

**NK310**

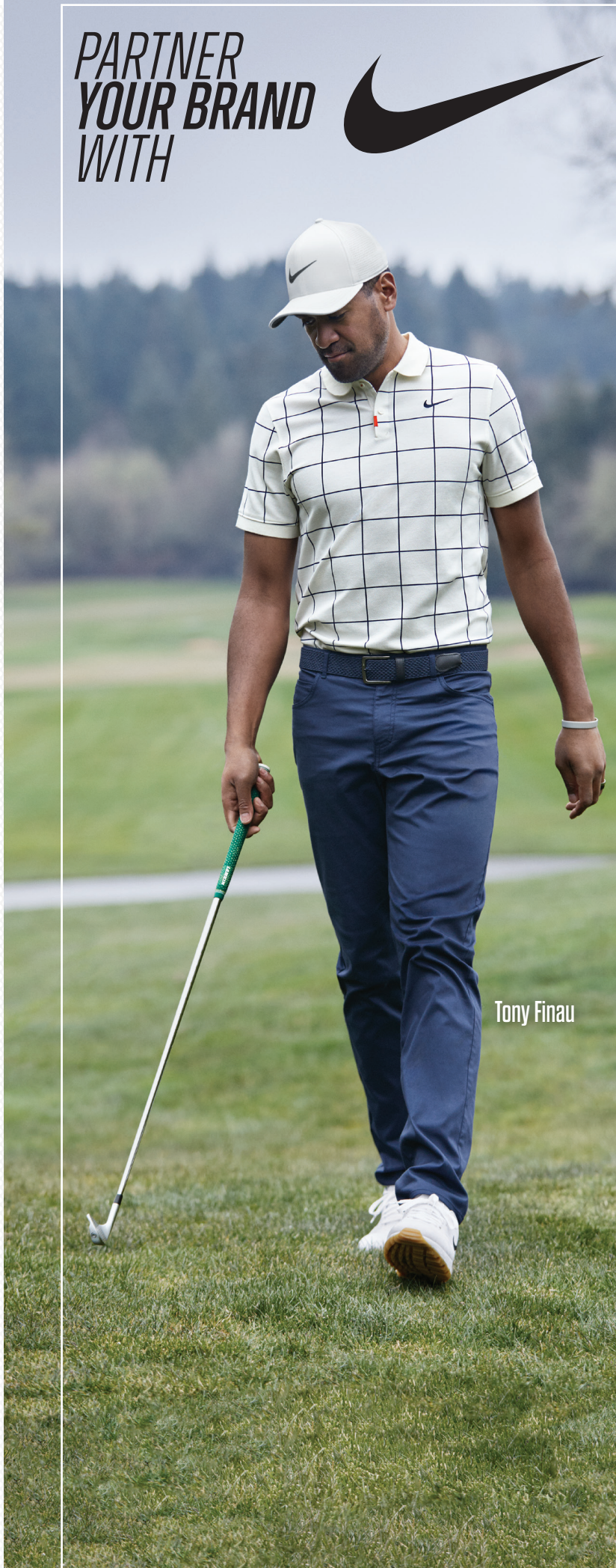
Dry vapor colour block polo

94% Polyester, 6% Spandex

**S** 37/39" **M** 39/41" **L** 41/43" **XL** 43/46"

**2XL** 46/49"

**PARTNER  
YOUR BRAND  
WITH**



Tony Finau





Rory McIlroy



Black



### NK290

Nike repel jacket player

96% Nylon, 4% Spandex

**S** 35/37.5" **M** 37.5/41" **L** 41/44" **XL** 44/48.5"

**2XL** 48.5/53.5"



Black/Black/Black



Black/White/  
Dark Grey



Obsidian/Obsidian/  
Black



### NK291

Nike dry top player half-zip

100% Polyester

**S** 35/37.5" **M** 37.5/41" **L** 41/44" **XL** 44/48.5"

**2XL** 48.5/53.5"

**DRI-FIT**



Black/Black/Black



Sky Grey/Gridiron/  
Gridiron



### NK296

Nike Shield crew core

100% Polyester

**S** 35/37.5" **M** 37.5/41" **L** 41/44" **XL** 44/48.5"

**2XL** 48.5/53.5"



Black



Obsidian



### NK319

Dri-FIT player long sleeve golf crew

Body: 100% Polyester, Front panel: 90% Polyester, 10% Spandex. Rib: 93% Polyester, 7% Spandex

**S** 88/96cm **M** 96/104cm **L** 104/112cm

**XL** 112/124cm **2XL** 124/136cm

**DRI-FIT**





**PARTNER  
YOUR BRAND  
WITH**



## LAYERING STYLES

**CAP  
IT OFF**



Black/  
Anthracite/  
White

College Navy/  
Anthracite/  
White

Dark Grey/  
Anthracite/  
White

White/  
Anthracite/  
Black

**NK188**

Nike legacy 91 tech cap  
100% Polyester

**One size**

**DRI-FIT**



Waterproof and windproof  
coverage thanks to Nike  
HyperShield fabric

Seam-sealed closures help  
keep water out



Black/Black/  
Black

**NK313**

Hypershield jacket convertible core  
100% Polyester

**S** 37/39" **M** 39/41" **L** 41/43" **XL** 43/46"  
**2XL** 46/49"



Ribbed fabric in high motion areas  
gives you room to bend and swing

Ribbed mesh on the upper back  
to vent out extra heat



Black/Dark Grey



Obsidian Blue/Diffused Blue



White/Sky Grey

**NK182**

Nike dry vapor top half-zip  
96% Polyester, 4% Elastic

**S** 18.5/19.5" **M** 19.5/20.5" **L** 21/22"  
**XL** 22/2.5" **2XL** 23/24.5"

**DRI-FIT**



**FINISH  
THE LOOK**



Black/  
Anthracite/  
White



College Navy/  
Anthracite/  
White



Game Royal/  
Anthracite/  
White



University Red/  
Anthracite/  
Black



White/  
Anthracite/  
Black

**NK187**

Nike L91 cap tech custom  
100% Polyester

**One size**

**DRI-FIT**





# QUALITY POLOS

WITH



LOOK OUT FOR  
**PRIMEGREEN**

A series of *high performance recycled materials* which represents adidas' commitment to phase out all virgin polyester by 2024 to help end plastic waste.

BREATHABLE

MOISTURE-  
WICKING

Moisture-wicking  
performance fabric

Branding  
on sleeve

Classic design polo shirt

Piqué-hydrophilic finish

**AD001**

adidas® Performance polo

Piqué -hydrophilic finish

**S** 34/37" **M** 37/40" **L** 40/44" **XL** 44/48"

**2XL** 48/52"



Black

Clear Sky

Collegiate  
Navy

Collegiate  
Red

Collegiate  
Royal

Green

Grey

Solar Pink

White





Black/Carbon

Grey/Red



White/Grey

White/Navy

## AD115

2-colour stripe polo  
100% PES piqué

**S** 34/37" **M** 37/40" **L** 40/44" **XL** 44/48"  
**2XL** 48/52"



Black

Bright Orange



Collegiate  
Navy

Collegiate  
Red



Collegiate  
Royal

Green



Grey Three

White

## AD036

Performance polo shirt  
100% Polyester

**XS** 31/33" **S** 34/37" **M** 37/40" **L** 40/44"  
**XL** 44/48" **2XL** 48/51"



adidas



Dustin Johnson



# PREPARE TO **TEE OFF**



1/4 zip fastening for  
venting in warmer temperatures

Lightweight, stretch fabric golf sweater



65% REC.PES, 35% PES  
Double-knit-hydrophilic finish

**DESIGNED FOR  
EASY-MOVING COMFORT**

## AD033

Club 1/4 zip  
65% REC.PES, 35% PES Double-knit-  
hydrophilic finish

**S** 34/37" **M** 37/40" **L** 40/44"  
**XL** 44/48" **2XL** 48/52"



Black



Navy



Red



White



**BACK DETAIL**



# DESIGNED TO PERFORM

AD079

adidas® golf performance  
cap crestable  
100% Polyester dobby  
One size

AD079



UPF50+

Pre-curved brim



Embroidered adidas® logo



Black Blue Grey Navy Red White



Six panel construction



Stretchy hook  
and loop adjustable back strap

## CLIMACOOL TECHNOLOGY

AD077

Performance cap  
100% Polyester  
One size

Climacool helps boost ventilation and give you the  
refreshing feeling of air on skin with moisture-absorbing  
properties allowing you to remain comfortable.

AD078

Climacool tour crestable cap  
100% Polyester  
S/M L/XL

RELAXED  
FIT



WATER-  
REPELLANT

UPF50+



AVAILABLE  
IN 2 SIZES



Amazon Black Bold Blue Power Red White



Black Grey Four Hi Res Red Trace Royal White

## KEEP YOUR FEET COMFORTABLE

MADE WITH  
**PRIMEGREEN**

This golf sock will give you  
great comfort and support  
during your round

Embroidered adidas® logo

Supportive mid-foot  
compression

Embroidered  
adidas® logo

AD041

adidas® 3-pack golf crew socks  
81% Recycled polyester, 19% Elastane  
6.5/8 8.5/11 12/14



Black/White/Grey

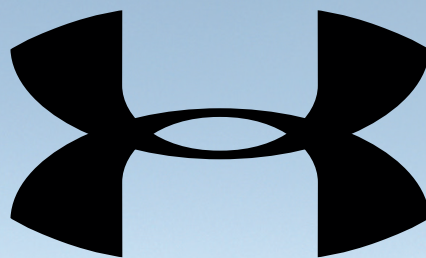
AD042

adidas® 3-pack golf ankle socks  
81% Recycled polyester, 19% Elastane  
6.5/8 8.5/11 12/14



Black/White/Grey





UNDER ARMOUR

## ON COURSE CONTROL

Made from a piqué knit fabric

UPF30+

MOISTURE-  
WICKING

Academy/  
Pitch Grey

Black/  
Pitch Grey

Steel/  
Black

White/  
Pitch Grey

Smooth, soft anti-pick, anti-pill fabric has a textured snag-free finish, 4-way stretch construction, moves better in every direction

### UA006

Performance polo textured  
95% Polyester, 5% Elastane. Collar: 100% Polyester

**S** 34/36" **M** 38/40" **L** 42/44" **XL** 46/48"  
**2XL** 50/52" **3XL** 54/56"

Anti-odour technology prevents  
the growth of odour-causing microbes

Fuller cut for complete comfort

Durable rib-knit collar



**heatgear®**

Built-in HeatGear® sweatband wicks away sweat to keep you cool and dry.

UA micro thread fabric uses re-engineered fibres designed to give superior stretch and breathability

100%  
POLYESTER

CLASSIC  
FIT

Structured front panels backed with foam padding for added comfort

Pre-curved visor and structured front panels



Back detail



Black/Black/White   Graphite/Black/Black   Midnight Navy/Graphite/White

### UA013

Blitzing 3.0 Cap  
100% Polyester

S/M M/L L/XL XL/2XL

Light, breathable  
Armour Fleece®  
with stretch for  
superior mobility

Generous ½ zip makes for easy layering,  
shaped hem for enhanced coverage

100%  
POLYESTER

Quick-drying, ultra-soft  
UA Tech™ fabric to  
keep you cool

MOISTURE-  
WICKING



Black/Black

### UA019

Armour fleece half zip

Body: 100% Polyester

S 34/36" M 38/40" L 42/44" XL 46/48"

2XL 50/52" 3XL 54/56"



### UA004

Tech™ 2.0 ½ zip long sleeve

100% Polyester

S 34/36" M 38/40" L 42/44" XL 46/48"

2XL 50/52" 3XL 54/56"



Black/  
Charcoal

Carbon Heather/  
Black

Anti-odour technology prevents the growth of odour-causing microbes

Dynamic arch support helps reduce foot fatigue

Strategic cushion reduces bulk, delivers flexibility and breathability

Mesh panels for added breathability

### UA012

HeatGear® crews (pack of 3 pairs)

97% Polyester, 3% Spandex

M 36/42 L 43/47 XL 47/50

Black/Black/  
Steel



White/White/  
Steel







BRINGING FRESH, AUTHENTIC  
PERSPECTIVES TO THE GAME WE LOVE.

## OPTI-DRI™

Technical fabric which helps to wick away moisture to keep you dry, creating a cooling effect to keep skin dry and comfortable.

Callaway Tour logo  
embroidered on  
the right sleeve in  
contrast colours

OPTI-DRI™  
UV BLOCK

Self-collar and  
3-button placket

Moisture-wicking  
and cooling  
technology to keep  
you dry and cool

OPTI-DRI™  
UV BLOCK



**CW031**

Denim jacquard polo  
100% Polyester

**XS** 33/35" **S** 36/38" **M** 39/41"  
**L** 42/44" **XL** 45/47" **2XL** 48/50"



Caviar Navy (Medieval Blue) Sapphire (Spring Break)



Bright White Grey (Asphalt) Navy (Peacoat) Sky (Spring Break) Tango Red

**CW025**

Swing Tech™ solid polo

92% Polyester, 8% Spandex

**XS** 34/36" **S** 36/38" **M** 38/41" **L** 41/43"

**XL** 43/45" **2XL** 45/47"

STRETCH  
SWING TECH™



**CW027**

Heathered jacquard polo

95% Polyester, 5% Elastane

**S** 36/38" **M** 39/41" **L** 42/44"

**XL** 45/47" **2XL** 48/50"



Black Heather Peacoat Heather





### CW076

Ribbed v-neck Merino sweater

100% Merino wool

**S** 38/40" **M** 42/44" **L** 46/48" **XL** 49/50"  
**2XL** 50"



Black Onyx Peacoat Navy Surfing Blue



### CW075

Ribbed 1/4 zip Merino sweater

100% Merino wool

**S** 38/40" **M** 42/44" **L** 46/48"  
**XL** 49/50" **2XL** 50"



Black Onyx Peacoat Navy Surfing Blue



### CW050

Corporate waterproof jacket

100% Polyester

**S** 36/38" **M** 39/41" **L** 42/44" **XL** 45/47"  
**2XL** 48/50"



Black (Caviar) Navy (Peacoat)



### CW078

Pieced waffle 1/4 zip pullover

95% Polyester, 5% Spandex

**S** 36/38" **M** 39/41" **L** 42/44"  
**XL** 45/47" **2XL** 48/50"



Castle Rock Heather Caviar Peacoat



### CW051

Corporate waterproof trousers

100% Polyester

**S** 28/30" **M** 32/34" **L** 36/38" **XL** 40/42"  
**2XL** 44/46"



Caviar



### CW090

Side crested structured cap

100% Polyester

**One size**



Black Navy Red White





# GLENMUIR 1891

## OFFICIAL 2021 RYDER CUP MERCHANDISE



Breathable, shrink-resistant knitwear with  
anti-pill treatment, spun in Britain



Ascot

Black

Light Grey Marl

Navy

### GMO8I

g.Devon zip-neck cotton  
sweater (MKC7381ZN-DEV)  
100% Cotton

**S** 38/40" **M** 40/42" **L** 42/44"  
**XL** 46/48" **2XL** 48/50"



### GMO10

g.Lomond lambswool v-neck  
sweater (MKL5900VN-LOM)  
100% Lambswool

**S** 38/40" **M** 40/42" **L** 42/44"  
**XL** 46/48" **2XL** 48/50"



### GMO11

g.Morar lambswool crew neck  
sweater (MKL5902CN-MOR)  
100% Lambswool

**S** 38/40" **M** 40/42" **L** 42/44"  
**XL** 46/48" **2XL** 48/50"



Black

Bordeaux

Bottle

Charcoal

Navy



Ascot Blue

Black

Bordeaux

Bottle

Charcoal

Light Grey Marl

Navy



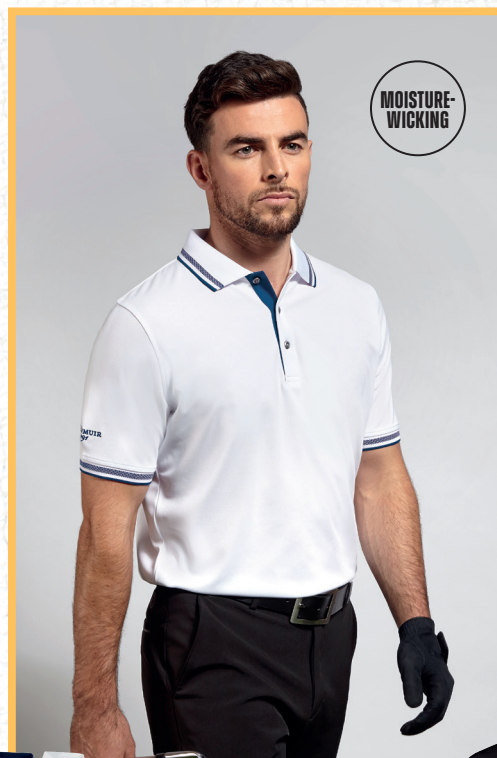


### GM077

g.Deacon performance piqué plain polo shirt (MSP7373-DEAC)  
100% Polyester  
**S** 38/40" **M** 40/42" **L** 42/44" **XL** 46/48"  
**2XL** 48/50"

### GM027

g.Kinloch piqué polo shirt (MSC7211-KIN)  
100% Combed cotton  
**S** 38/40" **M** 40/42" **L** 42/44"  
**XL** 46/48" **2XL** 48/50"



### GM084

g.Paloma women's performance piqué shirt (LSP2540-PALO)  
100% Performance polyester  
**S** 32/34" **M** 36/38" **L** 38/40" **XL** 42/44"  
**2XL** 46/48"



### GM085

g.Ethan tipped polo shirt (MSP7422-ETH)  
100% Performance polyester  
**S** 38/40" **M** 40/42" **L** 42/44" **XL** 46/48"  
**2XL** 48/50"





# ACCESSORIES

## FOR THE COURSE

TOWEL  
CITY

100%  
RINGSPUN  
COTTON

### TC013

Luxury range golf towel  
100% Ringspun cotton  
**One size** (30 x 50cm)

Luxury golf towel with soft, deep pile  
and excellent absorbency.  
Featuring a herringbone border  
with a convenient grommet and  
hanging loop.



Black Forest Fuchsia Navy Powder Blue Red White

### TC033

Printable border golf towel  
100% Cotton  
**One size** (40 x 60cm)



Black Navy White



100%  
COTTON

ARTG

This golf towel is made from  
450grams Turkish cotton and  
is provided with a 8cm wide  
polyester SUBLI-Me® border  
which can be ideally sublimated.

100%  
COTTON

### AR814

ARTG® SUBLI-Me® golf towel  
100% Cotton. Border 100% Polyester  
**One size** (30 x 50cm)



Anthracite Grey Black Dark Green French Navy Graphite



ki.mood



### KI003

Golf umbrella  
210T Polyester

**One size.** Height 105cm Approx diameter 100cm



Black Black/Burnt Lime Black/Orange Black/Red Bottle Green Burnt Lime Navy



Orange Red Royal Blue Sky Blue Slate Grey True Yellow White

QUADRA®



Black

### QD360

Pro golf umbrella  
Polyester pongee

**One size** (133cm diameter)



Leakproof puff valve spout provides a quick flow of water for instantaneous hydration and prevents leaking when not in use.

Strategically placed grip and ergonomic bottle design allow for easy handling.



Anthracite/Black/White Clear/Black/Black Game Royal/Black/White University Red/Black/White

### NK406

Hyper fuel water bottle 32oz

69% LDPE, 19% TPE, 19% PP, 1% Si valve

**One size**



Atomic Green/Atomic Green/Black Black/Black/White Clear/Black/Black Clear/Game Royal/Game Royal Clear/Pink Pow/Pink Pow Clear/Pink Rise/Pink Rise



Clear/Rush Orange/Black Pink Pow/Pink Pow/White Rush Orange/Rush Orange/Black Sport Red/Sport Red/White White/Black/Sport Red

### NK410

Big mouth bottle 2.0 - 22oz

73% Low-density polyethylene, 23% Polypropylene, 4% Silicone

**One size**



A full-page photograph of golfer Dustin Johnson in the middle of a golf swing. He is wearing a light blue polo shirt, dark navy trousers, and a white cap with 'TPC' and 'Portside' logos. The background shows a lush green golf course with trees and a clear blue sky. In the top left corner, there are decorative horizontal lines and three small dots in white, yellow, and white.

Dustin Johnson

*ENQUIRE FOR MORE DETAILS*

